

# RAUWOLFIA

Mrs. M. Vani

Dept. of Pharmacognosy & Phytochemistry

Vijaya Institute of Pharmaceutical Sciences for Women

Vijayawada





## Pharmacognostic Study

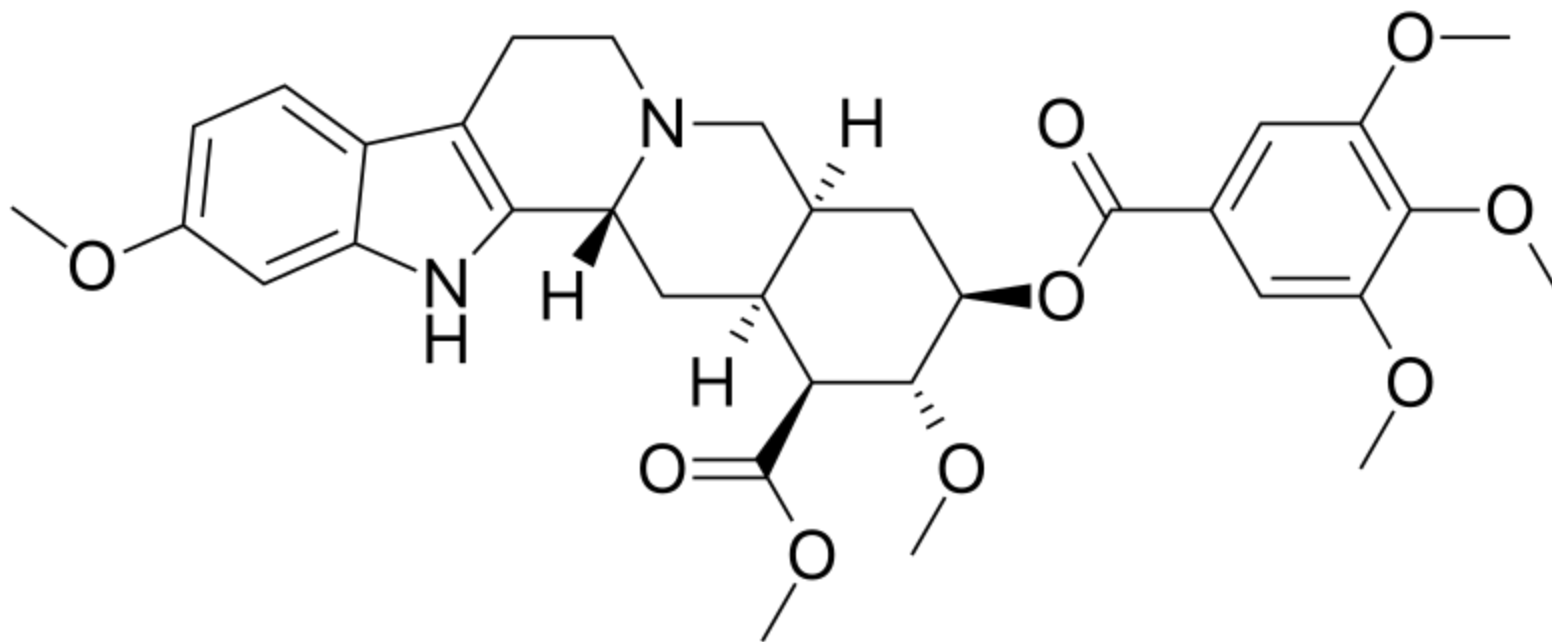
- *Rauwolfia serpentina*, the Indian snakeroot, devil pepper, or serpentine wood of Apocyanaceae
- *Rauwolfia* is a perennial undershrub widely distributed in India in the sub Himalayan regions up to 1,000 metres (3,300 ft).

# Chemical composition

- *Rauvolfia serpentina* contains
- Alkaloids of the indole group
- Reserpine,
- Serpentine
- Ajmaline



# Reserpine



## Therapeutic Uses

- *Rauwolfia serpentina* is the source of the phytochemical, **reserpine**
- Used in the treatment of **Systolic hypertension**

# Adverse effects

- *Rauvolfia serpentina* may cause adverse effects by interacting with various prescription drugs  
or
- *via* interference with mechanisms of mental depression  
or
- Peptic ulcer.



# Adverse effects

- The reserpine in *R. serpentina* is associated with diverse adverse effects
- Vomiting,
- Diarrhoea,
- Dizziness,
- Headache,
- Anxiety,

Or

- hypersensitivity reactions.